

## Using the Pervasive<sup>®</sup> PSQL .NET Provider within Visual Studio<sup>®</sup> 2008

---

Pervasive PSQL White Paper  
March 2008

## TABLE OF CONTENTS

<b>OVERVIEW</b> . . . . .	<b>3</b>
<b>CODE BASED</b> . . . . .	<b>3</b>
<b>WIZARD BASED</b> . . . . .	<b>4</b>
<b>SERVER EXPLORER INTEGRATION</b> . . . . .	<b>6</b>
<b>CONCLUSION</b> . . . . .	<b>7</b>
CONTACT/TRADemark INFORMATION . . . . .	8

## OVERVIEW

In this paper, we'll discuss the options for using the Pervasive PSQL Provider within Visual Studio 2008. We'll start by showing how to use code to access the Provider. Then, we'll show how to build the same sample application using Server Explorer and the Data Source Configuration Wizard.

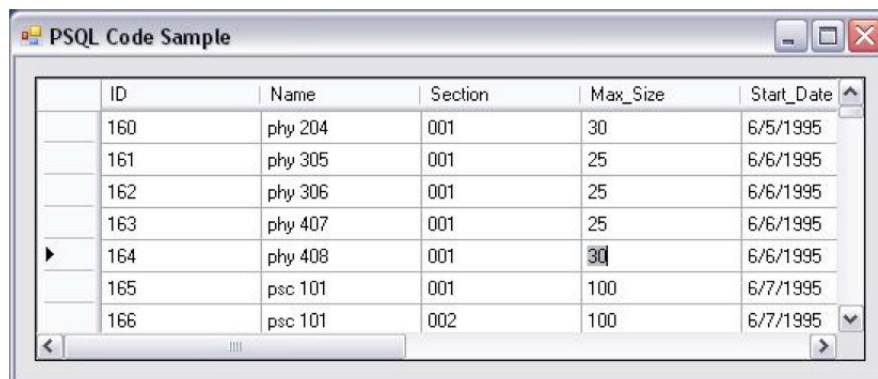
## CODE BASED

Currently, using code is the only way to access the Provider within Visual Studio 2008. Using code is simple and easy and provides the most control. We're going to use code to create a Windows Forms application that displays records in a grid.

The following code segment shows how to open the connection, generate a resultset, and display it in a DataGridView control.

```
//Create the Connection
PsqlConnection conn = new PsqlConnection("ServerDSN=DEMODATA");
//Create the Command
PsqlCommand cmd = new PsqlCommand("select * from class", conn);
//Create a DataAdapter
PsqlDataAdapter da = new PsqlDataAdapter();
//Create a DataTable
DataTable table = new DataTable();
da.SelectCommand = cmd;
//Fill the DataAdapter with the results of the Command
da.Fill(table);
//Set up the DataGridView control
dataGridView1.AutoGenerateColumns = true;
dataGridView1.AutoSizeColumnsMode =
    DataGridViewAutoSizeColumnsMode.DisplayedCellsExceptHeaders;
dataGridView1.EditMode = DataGridViewEditMode.EditOnEnter;
//Set the Binding Source to the DataTable
bindingSource1.DataSource = table;
//Set the DataSource of the DataGridView to the BindingSource
dataGridView1.DataSource = bindingSource1;
```

The resulting application looks something like this screenshot:



The screenshot shows a window titled "PSQL Code Sample" containing a DataGridView control. The DataGridView displays a table with the following data:

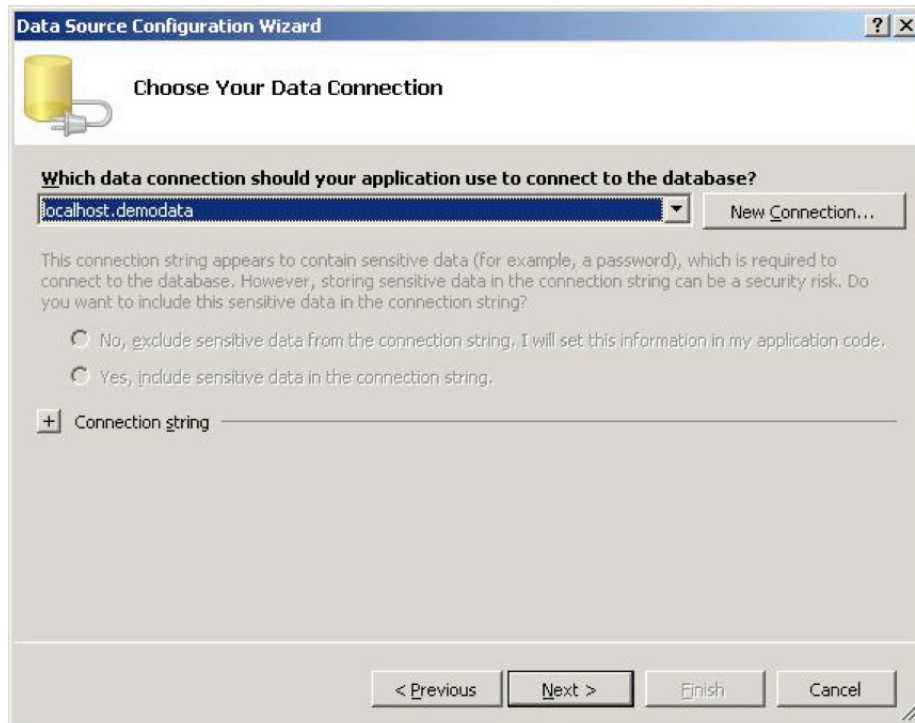
ID	Name	Section	Max_Size	Start_Date
160	phy 204	001	30	6/5/1995
161	phy 305	001	25	6/6/1995
162	phy 306	001	25	6/6/1995
163	phy 407	001	25	6/6/1995
164	phy 408	001	30	6/6/1995
165	psc 101	001	100	6/7/1995
166	psc 101	002	100	6/7/1995

## WIZARD BASED

With Pervasive PSQL Summit v10.10™, the Pervasive Provider is tightly integrated within the Visual Studio Development Environment and Server Explorer. This integration makes rapid development easier and uses less coding.

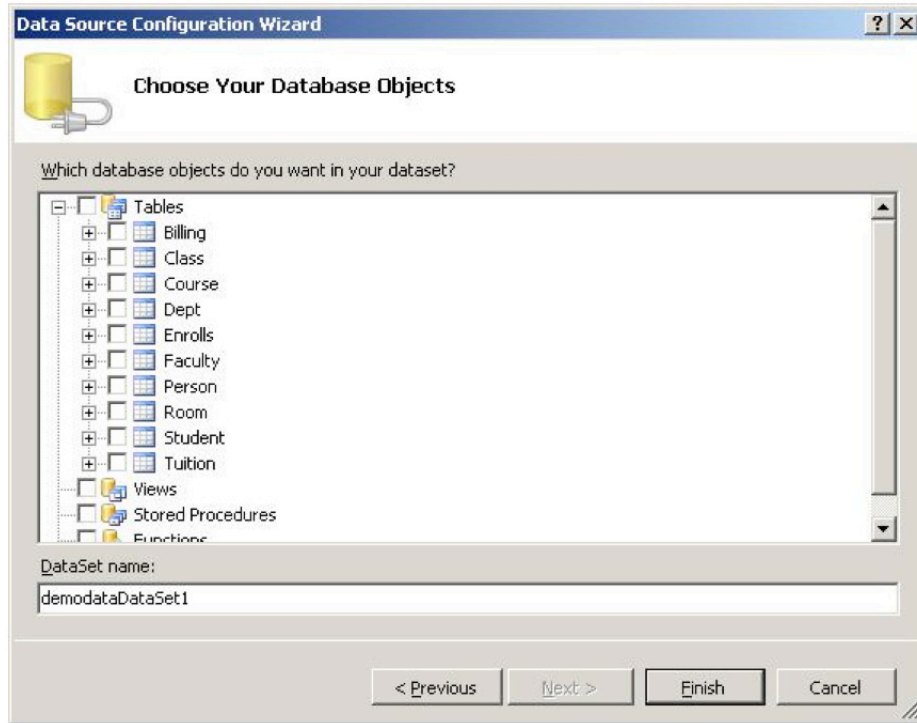
The steps are below:

1. Create new Windows Forms project.
2. Add a DataGridView control.
3. Select “Choose Data Source” and select “Add Project Data Source.”



4. Select “Database” and click “Next.”
5. Select existing PSQL connection or click “New Connection” to create a new connection.
6. Click “Next” to save the Connection String in the Configuration file.

7. Select the Table, View or Stored Procedure to populate the DataSet and click “Finish.”



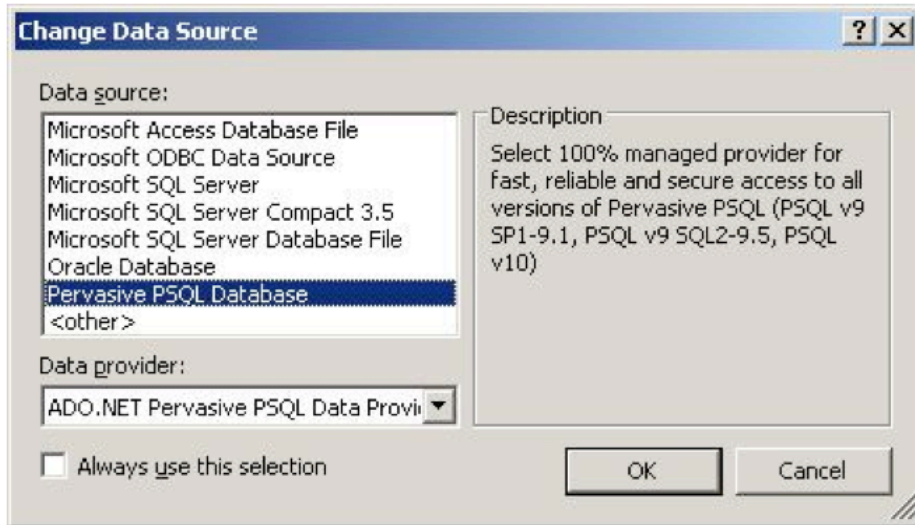
8. This will add a “BindingSource” to the DataGridView.

9. The application can now run and display data.

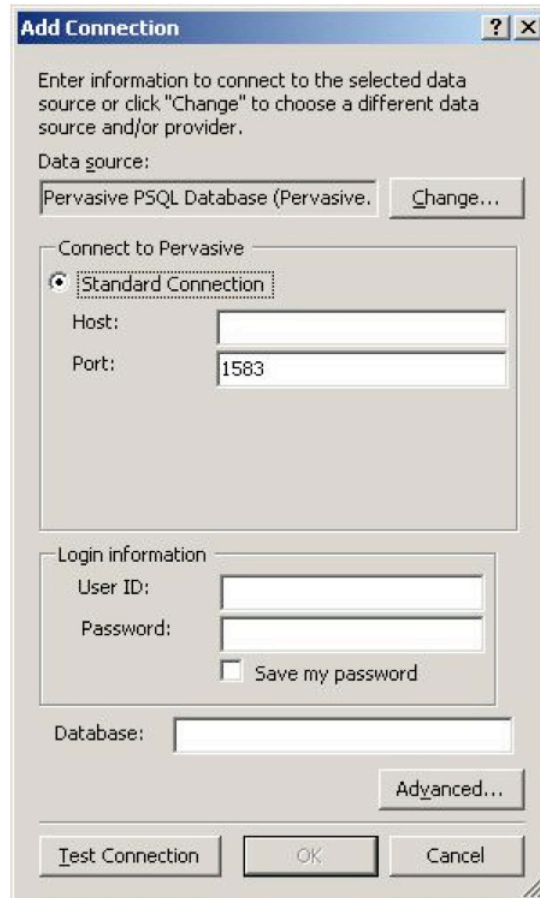
## SERVER EXPLORER INTEGRATION

With Pervasive PSQL Summit v10.10, the Provider is accessible through the Visual Studio Server Explorer. Adding a connection and querying data is a simple matter in Server Explorer. Perform the following steps to add a connection and execute a query:

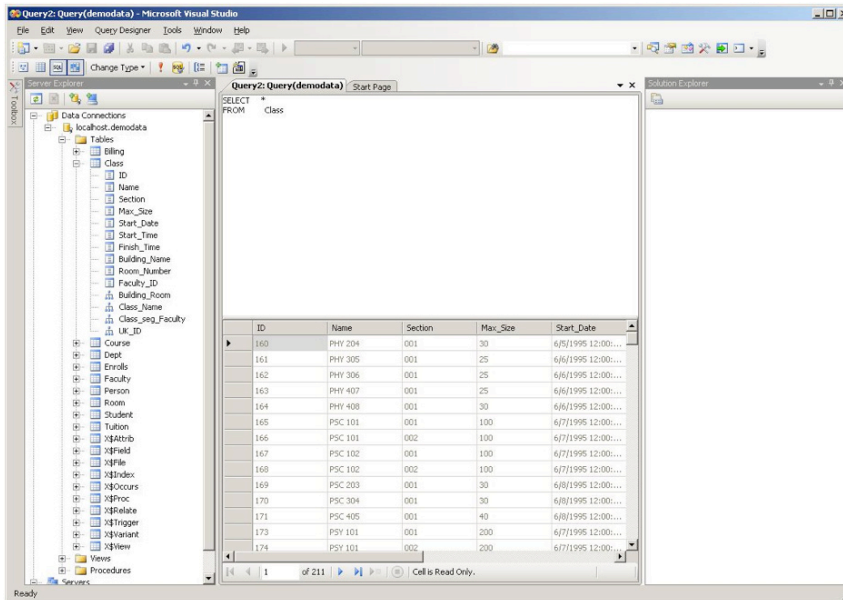
1. Add a new connection by right clicking the “Data Connections” option in Server Explorer.
2. The Change Data Source dialog is displayed. Select the Pervasive PSQL Database provider.



3. The Add Connection dialog is then displayed and the connection details can be entered.



4. Once the connection has been created, a New Query can be added and executed.



## CONCLUSION

Pervasive PSQL .NET Provider's integration with Visual Studio 2008 offers developers great choices when building PSQL applications. Whether it's enabling integration with code, with the Data Source Configuration Wizard or using the Visual Studio Server Explorer, Pervasive will continue to deliver the latest updates and support for the Microsoft .NET framework and Visual Studio 2008.

## Contact Information

Pervasive Software Inc.  
12365 Riata Trace Parkway, Building II  
Austin, Texas 78727

### United States

800.287.4383  
512.231.6000  
Fax: 512.231.6010  
info@pervasive.com

### EMEA

+800.1212.3434  
cic@pervasive.com

<http://www.pervasive.com>

---

© 2008 Pervasive Software Inc. All rights reserved. All Pervasive brand and product names are trademarks or registered trademarks of Pervasive Software Inc. in the United States and other countries. All other marks are the property of their respective owners.